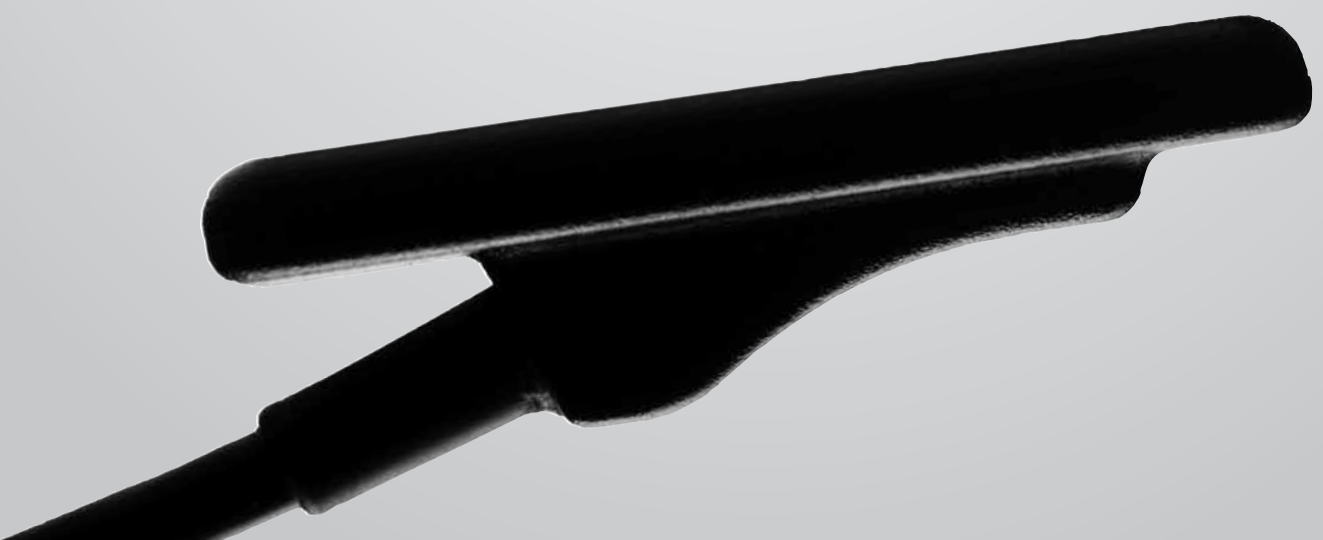




SUNI: the pioneer in digital radiography

As the thinnest sensors in the world, Dr. Suni Plus System represents the perfect balance of form and function. Dr. Suni Plus sensors are designed with rounded corners that ensure easy positioning and optimal patient comfort. Plus the unique design of its reinforced cable attachment and ultrasonically sealed hardened outer casing makes them incredibly reliable and durable. These features allow us to offer an industry leading three year standard warranty. With Suni Software, Dr. Suni Plus delivers superior image quality while integrating with leading Practice Management Software programs.



dr.suniplus

Technical data	Size 0	Size 1	Size 2
Sensor Dimensions (mm)	32.5 x 25.6	39.5 x 26.0	43.5 x 31.5
Active Area (mm)	26.01 x 20.97	31.95 x 19.98	36.0 x 25.97
Sensor Technology	CCD	CCD	CCD
Maximum Gray Levels	4096	4096	4096
Sensor Cable	9 feet (3m)	9 feet (3m)	9 feet (3m)
Cable Attachment	Reinforced Strain Relief	Reinforced Strain Relief	Reinforced Strain Relief
USB Module	USB 2.0 Module	USB 2.0 Module	USB 2.0 Module
USA	Prof. Suni	Prof. Suni	Prof. Suni
Intl.	Dr. Suni	Dr. Suni	Dr. Suni
Warranty	3 Years	3 Years	3 Years

PC Requirements	Minimum	Recommended
CPU Speed	1.2 GHz Pentium 4	2.0 GHz Pentium 4
Memory	512 MB	1 GB
Operating System	Windows XP Pro or Vista Business	Windows 7
Hard Disk	40 GB	80 GB
Monitor	S-VGA with 0.28 mm dot pitch	S-VGA with 0.25 mm dot pitch
Monitor Settings	16-bit color 1024 x 768 Resolution	16-bit color 1024 x 768 Resolution
USB Port	USB 2.0	USB 2.0



6840 Via Del Oro | Suite 160 | San Jose, CA 95119
www.suni.com 1 408 227 6698 | +32 58 317 464

Revision B 2/2012

dr.suniplus



VALUE-ADDED DENTISTRY

Low Radiation Sensor
Rugged, Durable and Reliable
The Best Value in Digital
Born in Silicon Valley

Suni.

The Simple Choice!

+ Intuitive Software – Easy To Use – Perfect Results

Specialized functions including calibrated length measurements, image enhancement tools, digital zoom and colorizing, all of which help to provide more accurate diagnosis. Pre-formatted letters, referral emails, drawing tools and reports simplify communication with patients and colleagues. Suni software is TWAIN compliant which ensures integration with other TWAIN devices including cameras, scanners and panoramic machines.



Suni's unique image bar floats beside any practice management software and other applications. This allows you to view and paste all images from Suni patients into other programs.

+ Simple and Easy Software Integration

Suni Software seamlessly integrates with all leading practice management software programs.

Dr. Testimonials

Dr. James Jesse

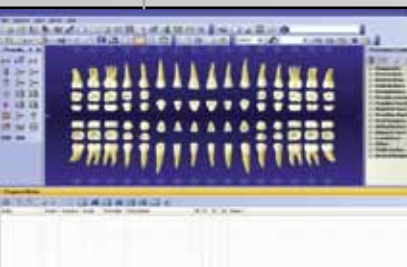
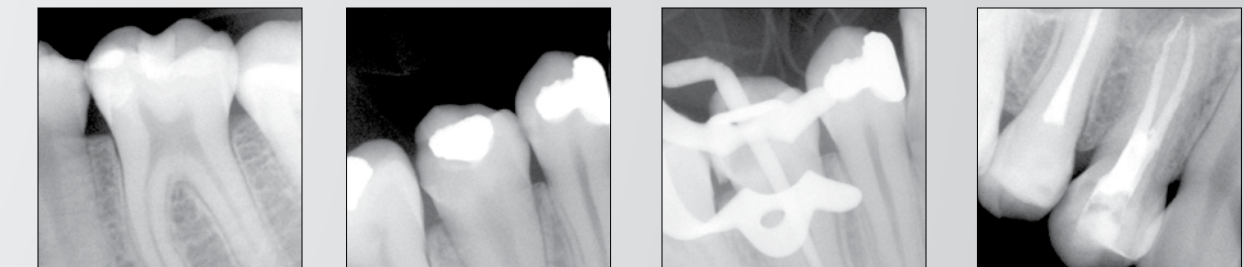
"I can trust the product, I trust the people, and it's because of the relationship that's on going is why I talk to Suni Digital Radiography."

The Thinnest Sensor in the World.



+ Perfectly designed for optimal patient comfort

- Dr. Suni Plus are the thinnest sensors in the world
- Designed with rounded corners for superior patient comfort
- Built to last with a reinforced cable attachment, Dr. Suni Plus sensors are extremely reliable and durable and come with a three year warranty standard
- The plug and play sensors are easy to install and can be operated in different PC's throughout the practice
- Since one size does not fit all patients, three sensor sizes are available, including children and adults with special anatomical considerations:



Dr. Suni Plus sensors are extremely comfortable, flexible and are the best value in digital.



sunimac
Sunimac Imaging Software



SuniMac uses the power and style typically associated with Mac products and includes a streamlined, sleek design, as well as an easy-to-use window dragging feature.



Dr. Suni Sensors are available in three sensor sizes. 0, 1 & 2

